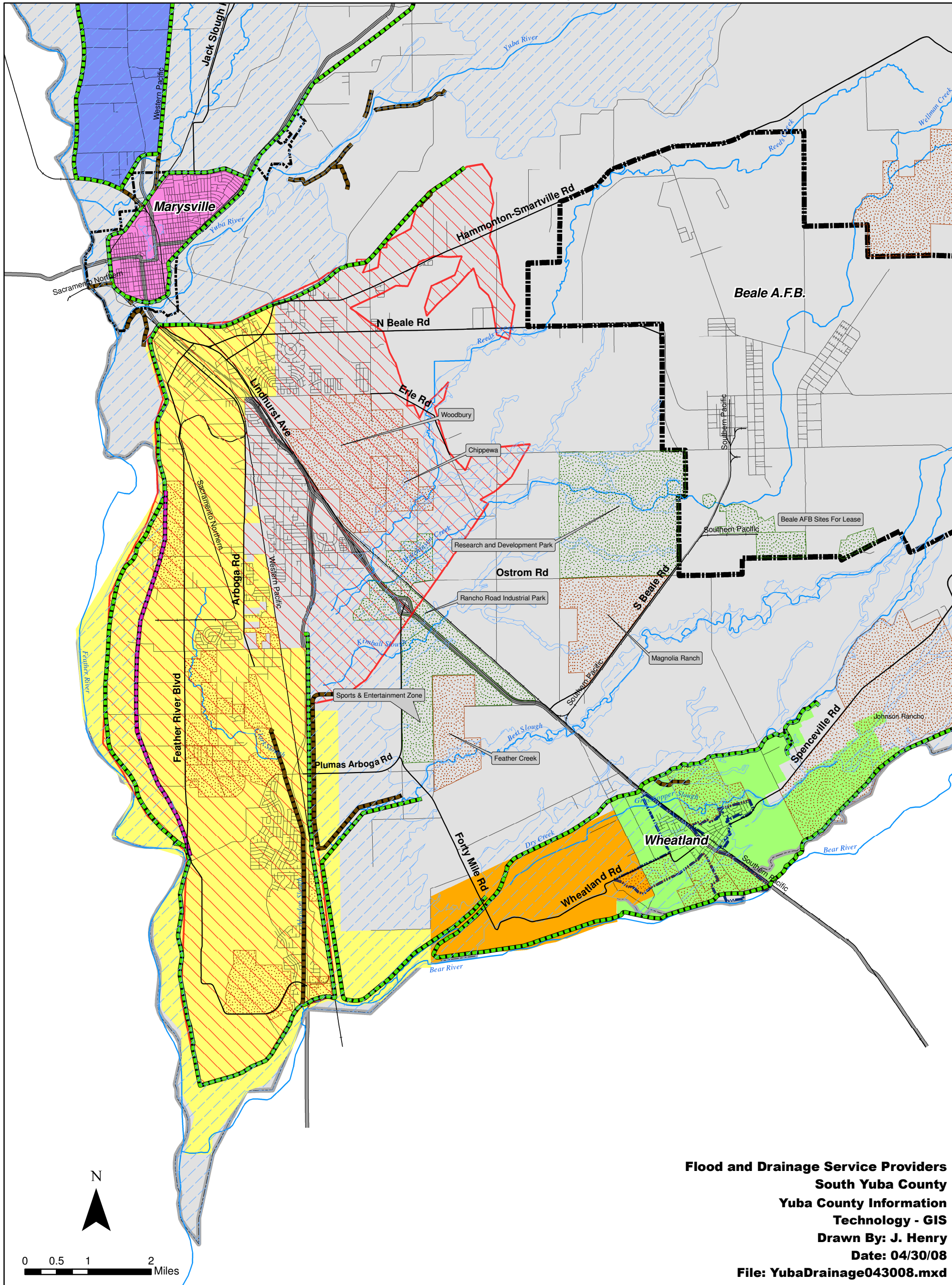


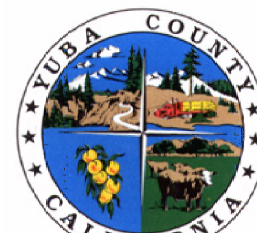
# Flood and Drainage Service Providers South Yuba County



**Legend**

- |  |                           |  |  |  |                                  |
|--|---------------------------|--|--|--|----------------------------------|
|  | City Of Marysville        |  | Reclamation District 2103              |  | Lands Benefited By TRLIA Program |
|  | City Of Wheatland         |  | Reclamation District 10                |  | Levee                            |
|  | Marysville Levee District |  | Economic Development Areas             |  | DWR Project Levees               |
|  | Reclamation District 784  |  | Planned and Proposed Subdivisions      |  | Planned Setback Levee            |
|  | Reclamation District 817  |  | Projected Post-Improvement Floodplain* |  |                                  |

\* Source: MBK Engineers



DRAFT